



SAINT MARY'S  
CATHOLIC  
CHURCH  
MULBERRY ST

1794 2026

FIRST SUNDAY OF LENT  
22ND FEBRUARY 2026

# THE HIDDEN GEM


A SANCTUARY OF SILENCE AND PRAYER  
AT THE HEART OF THE CITY

SERVING THE PEOPLE OF MANCHESTER SINCE 1794

## PARISH PRIEST

Monsignor Canon Anthony Kay

 St Mary's Church, 17 Mulberry Street  
MANCHESTER, M2 6LN

 0161 834 3547

 anthony.kay@dioceseofsalford.org.uk

 www.hiddengem.me.uk

 St Mary's Parish  
@rchiddengem

## TO MAKE A DONATION TO THE CHURCH RESTORATION FUND

Please scan the QR code  
with your mobile phone camera.



Please enter the amount of your donation and then input your payment card details. If you are a tax payer, please remember to tick the Gift Aid box.

Thank you for your generosity

## THE HOLY SEASON OF LENT

As the holy season of Lent unfolds, Holy Mother Church once again calls her children into the desert with Our Blessed Lord. For forty days we unite ourselves to His fasting and prayer, preparing our souls to worthily celebrate the triumph of Easter. Lent is not merely a time of external observance, but of deep interior conversion.

The traditional pillars of Lent - **prayer, fasting, and almsgiving** - remain our sure guide.

**Prayer** anchors us more firmly in the presence of God. Consider setting aside additional time each day for prayer, the Holy Rosary, or spiritual reading. Walking with Our Lady, especially through the sorrows of Blessed Virgin Mary, softens the heart and strengthens our resolve to follow Christ faithfully.

**Fasting** disciplines the body and purifies the soul. By willingly embracing small sacrifices - whether in food, comfort, or entertainment - we make reparation for sin and learn mastery over disordered appetites. As taught and safeguarded by the Catholic Church, fasting is not an end in itself but a means of growing in charity and freedom.

**Almsgiving** turns our gaze outward. True penance blossoms into love of neighbour. Acts of generosity, patience, and mercy make visible the grace at work within us.

Finally, approach the sacraments frequently. A sincere confession and devout Holy Communion renew the soul and strengthen it against temptation.

If we embrace Lent wholeheartedly - without compromise or delay - we shall arrive at Easter not merely having observed a season, but having drawn closer to the Sacred Heart of Jesus, transformed by grace and ready to live more fully for His glory.

This year's **Lenten programme at St Mary's** includes:

- Opportunity each day for the Sacrament of Penance in **Confession**.
- Daily **Adoration of the Blessed Sacrament**
- A 6.00pm **Evening Mass** on the Fridays of Lent followed by Stations of the Cross and prayers at the Calvary Altar.
- A short **Stations of the Cross** after lunchtime weekday Mass, Monday to Thursday, after the evening Mass on Fridays, and after the lunchtime Mass on Saturdays.

## WELCOME TO THE HIDDEN GEM

St. Mary's, Mulberry Street, was founded in 1794 in the centre of what was then the poorest quarter of Manchester.

It is now thought to be one of the oldest post Reformation Catholic churches founded as a church in England. The Relief Act allowing Catholic churches to be built again as churches was passed in 1791 and the building of St. Mary's was begun in 1792.

The church's vital connection with the most ancient Christian traditions of Manchester, and its uninterrupted service to the city since its foundation, make it one of the most beloved institutions in Manchester.

## SOME LITTLE SUGGESTIONS TO HELP US IN OUR WORSHIP IN CHURCH

### RECEIVING HOLY COMMUNION REVERENTLY



Receiving  
Holy Communion  
on the tongue

As Catholics we believe that the Holy Eucharist is the true Body and Blood of Jesus Christ. Receiving Holy Communion is both an expression of this faith and of our communion with the Catholic Church. Practising Roman Catholics may receive Holy Communion if they are free from grave sin and have also fasted from food and drink for one hour prior. Holy Communion can be received either on the tongue or the hand, but it has to be received with reverence and needs to be consumed in front of the priest. (If you receive Holy Communion on the hand, please extend the hands on top of each other and flat, as a throne for Our Eucharistic Lord)





Receiving  
Holy Communion  
in the hand

If you belong to another Christian community, other faith or none, you cannot receive Holy Communion. You are very welcome to come forward and ask for a blessing instead. Please indicate you wish to receive a blessing by crossing your arms over your chest

# THIS WEEK AT ST MARY'S

MONDAY 23 February Lent Feria	TUESDAY 24 February Lent Feria	WEDNESDAY 25 February Lent Feria	THURSDAY 26 February Lent Feria	FRIDAY 27 February Lent Feria	SATURDAY 28 February Lent Feria	SUNDAY 01 March SECOND SUNDAY OF LENT
09.30am Church opens	09.30am Church opens	09.30am Church opens	09.30am Church opens	09.30am Church opens	09.30am Church opens	8.30am Church opens
11.00am - 12.25pm Adoration of the Blessed Sacrament	11.00am - 12.25pm Adoration of the Blessed Sacrament	11.00am - 12.25pm Adoration of the Blessed Sacrament	11.00am - 12.25pm Adoration of the Blessed Sacrament	11.00am - 12.25pm Adoration of the Blessed Sacrament	10.30am - 11.55pm Adoration of the Blessed Sacrament	09.00am - 9.45am Adoration of the Blessed Sacrament and Confessions
11.00am - 11.50am Confessions	11.00am - 11.50am Confessions	11.00am - 11.50am Confessions	11.00am - 11.50am Confessions	11.00am - 11.50am Confessions	10.30am - 11.15am Confessions	10.00am HOLY MASS
12 noon Holy Rosary & Benediction	12 noon Holy Rosary & Benediction	12 noon Holy Rosary & Benediction	12 noon Holy Rosary & Benediction	12 noon Holy Rosary & Benediction	11.30am Holy Rosary & Benediction	11.00am CHILDREN'S CATECHISM
12.30pm HOLY MASS	12.30pm HOLY MASS	12.30pm HOLY MASS	12.30pm HOLY MASS	12.30pm HOLY MASS	12 noon HOLY MASS	12 noon SOLEMN MASS
Followed by Stations of the Cross	Followed by Stations of the Cross	Followed by Stations of the Cross	Followed by Stations of the Cross	Followed by Stations of the Cross	Followed by Stations of the Cross	Church closes after Mass
4.00pm Church closes	4.00pm Church closes	4.00pm Church closes	4.00pm Church closes	4.00pm Church closes	4.00pm - 5.00pm Adoration of the Blessed Sacrament	
				2.30pm - 2.50pm Confessions	4.00pm - 5.00pm Confessions	
				3.00pm Chaplet of Divine Mercy & Benediction	5.15pm VIGIL MASS of SUNDAY	
			7.00pm ADULTS' CATECHISM	6.00pm HOLY MASS followed by Stations of the Cross	Church closes after Mass	
				Church closes after Stations	Church closes after Mass	

## PARISH DIARY

Thursday 25 February	ADULTS' CATECHISM CLASS	7.00pm - 8.00pm For adults wishing to explore the Catholic Faith through a structured series of Catechism Classes: For adults who wish to be baptised or to be received into Communion with the Catholic Church or for adult Catholics preparing for Sacrament of Confirmation.
Friday 26 February	FRIDAYS OF LENT	11.00am Adoration of the Blessed Sacrament and Confessions 12 noon Holy Rosary 12.30pm Holy Mass followed by Adoration of the Blessed Sacrament 2.30pm Confessions 3.00pm Divine Mercy Chaplet 6.00pm Holy Mass followed by Stations of the Cross
Sunday 28 February	CHILDRENS' CATECHISM CLASS for FIRST HOLY COMMUNION and CONFIRMATION	11.00am - 11.45am For children preparing for the Sacraments of Holy Communion and Confirmation
Friday 06 March	FIRST FRIDAY DEVOTIONS 	11.00am Adoration of the Blessed Sacrament and Confessions 12 noon Holy Rosary 12.30pm Holy Mass 1.00pm Devotions to the Sacred Heart of Jesus
Saturday 07 March	FIRST SATURDAY DEVOTIONS 	10.00am Adoration of the Blessed Sacrament and Confessions 11.30am Holy Rosary 12noon Holy Mass 12.30pm Devotions to the Immaculate Heart of Mary
	EASTER TRIDUUM	Holy Thursday 6.00pm Mass of the Lord's Supper Good Friday 3.00pm Celebration of the Lord's Passion Holy Saturday 7.30pm Easter Vigil of the Lord's Resurrection
Monday 06 April	CELEBRATION of the CENTENARY of the CONSECRATION of St Mary's Church	12.30pm SOLEMN MASS celebrated by Bishop John Arnold, Bishop of Salford, on Easter Monday, followed by a Buffet Lunch at the Fountain House, Albert Square

## CENTENARY OF THE CONSECRATION OF SAINT MARY'S CHURCH

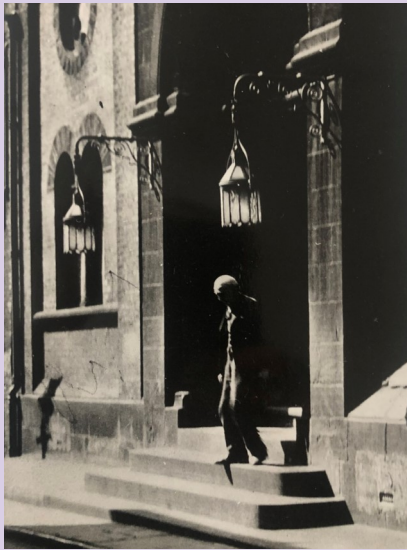
On 5th April, 1926, Easter Monday that year, St Mary's church was consecrated by the Right Reverend Thomas Henshaw, Bishop of Salford. Early in his time as Bishop of Salford, Bishop Henshaw consecrated St Mary's church. In the Code of Canon Law at the time, any debt on a church had to be paid off before a church could be consecrated, i.e. given over to the worship of God.

This year we celebrate the **centenary of the consecration of St Mary's church**. The 5th April 2026 falls on Easter Sunday this year so we have decided to hold a Centenary Mass on **Easter Monday, 6th April**.

Bishop John Arnold, Bishop of Salford, has kindly agreed to be with us on Easter Monday for a **Solemn Mass at 12.30pm** to mark the centenary of the consecration of church.

After Mass, we have organised a **buffet lunch** for all parishioners in the Fountain House on Albert Square. The buffet will be in the Memorial Hall and there is a lift in the building to get to the function room.

Tickets for the lunch are £10 each and are free for children and are available from the Piety Stall this weekend. Please join us on this special occasion as we celebrate and give thanks as a parish with our bishop.



## PASTORAL LETTER FROM BISHOP JOHN

Please find enclosed with this weekend's parish newsletter a Pastoral Letter from Bishop John for the First Sunday of Lent.

## MAY SHE REST IN PEACE

Of your charity, please pray for the happy repose of the soul of one of our parishioners, **Celia Briden**, who has died recently and whose Requiem Mass will be celebrated on Tuesday 3rd March at 1.30pm prior to cremation at Peel Crematorium. Our deepest sympathy goes to her family at this time. May she rest in peace.

## GREGORIAN CHANT SCHOLA

Here at St Mary's, we have a **Gregorian Chant Schola** to help to support the singing of the Gregorian Chant at the 12noon Solemn Mass on Sundays. The introduction of Gregorian Chant and our chant group has been one of the great things that we have done as a parish in the last couple of years. One of our parishioners, Dr Rosemarie Darby, is directing the Schola and teaching us the chant, supported by our organist, Nathan. Short practices take place on Sunday mornings at 11.15am, in preparation for the 12noon Mass.



If you are interested in joining us, simply come along on Sundays and introduce yourself to Rosemarie or Nathan. No experience is necessary. As we start preparing for Holy Week and the celebration of the Sacred Triduum, it would be good to increase the numbers in our Chant Schola, so please think about joining us and learning the chant. It is truly making a huge difference to the celebration of the Sacred Liturgy.

## A PARISH PILGRIMAGE TO LOURDES

This year we are organising a parish pilgrimage to Lourdes. Following a very successful parish pilgrimage to Walsingham last October, after which many of the participants asked that we organise a parish pilgrimage this year as well, so we have decided to organise a **5 day Parish Pilgrimage to Lourdes** in the summer. We are using the services of a local travel agent, Northern Star Travel, who is used to organising pilgrimages to Lourdes all year round.

*The dates of the pilgrimage are:*

**Tuesday 16th June - Saturday 20th June 2026**

The cost for the five day pilgrimage is:

**£699 per person [sharing a Twin Room]**

**£819 per person [in a Single Room]**

*which includes:*

- Return Flights from Manchester to Carcassonne
- Airport Duty and Passenger Taxes - One 20 kg suitcase per person
- Coach transfer from Carcassonne to Lourdes
- 4 nights full board in the 4\*\*\*\* Hotel Eliseo
- Services of a Northern Star Travel Rep
- Full Pilgrimage Programme

**Further details and booking forms are available at the back of church**

**Please ask Fr Anthony for more information**



# LOURDES



# SANCTUAIRE

## HOLY MASS INTENTIONS

The Holy Sacrifice of the Mass will be celebrated for the following intentions:

**Lately deceased:** Fr Bob Morrow; Riccardo Anguzza ; Vaclav Nohejl; Celia Briden; Mike Conlan; Leonie Chambers; David Payne; Thomas Feeney; Andy Nally; David Williams; Kolawole Nathaniel Sanni; Camille Robinson; Liam Ping Yum; Bridget Cooper

**Anniversaries:** Lois Lewis (25/02); Patricia Clark; John Hopkins; Liam Hughes

**In remembrance:** The Holy Souls; Cynthia; Pedro; Sole-dad; Edgardo; Mary Taylor & Ellen Taylor; Kevin & Winnie Smalley; Agnes Giles; Anne Woolmer;

**Special Intentions:** The Das family; Financial support; Adrian & Alvin; Ciarra; The Peat family; Mauree Reagan; Heath McCabe; The Deloughry family; Kate Moss; Donor's intentions; Raymond Simcox; Janet Parkinson; For marriage; Joan Clyne; Helen Crawley; John; Geraldine Anderson; Sean (John) Clarke; Anna A; Samantha; Angela; Alison; Vishant; Felcia; Tracey Foster; Magda Booth

## CARITAS FOODBANK

We continue to welcome any donations to the **Food-bank Collection point** at the back of church. The parish Caritas group makes fortnightly deliveries from the foodbank to Caritas. Also, all donations to the **Poor Box** at the back of church always go to support those in need.

**Thank you for your generosity to Caritas**

Can you help?

**This month we are collecting**



Tinned  
veg - peas,  
carrots,  
potatoes

## SANCTUARY CANDLES



### THE CALVARY ALTAR

- [1] Kathleen & Michael Campbell
- [2] Stone and Kay families RIP
- [3] Ann Smith RIP (A)
- [4] Tommy Crook RIP (A) & family
- [5] Chris Smith RIP

### THE SACRED HEART

- [1] Christopher Fitzpatrick RIP
- [2] Ann Smith RIP (A 27/02)
- [3] Chris Smith RIP
- [4] Kathleen Keavney RIP
- [5] Halligan family of Bury

### TABERNACLE (OUR LADY)

- [1] Betty Spedding RIP (A)
- [2] Holy Souls

### TABERNACLE (LEFT SIDE)

- [1] John & Ruth Kay (SI)
- [2] George Jewell RIP

### TABERNACLE (RIGHT SIDE)

- [1] Shantha J.
- [2] The Varkeys

### TABERNACLE (ST JOSEPH)

- [1] Emma and Violet
- [2] Scott family

### ST ANTHONY OF PADUA

- [1] Daisy Dixon (SI)
- [2] Karl (SI)

### ST THERESE OF LISIEUX

- [1] For mum and her peace
- [2] For my anxiety to settle

### OUR LADY OF MANCHESTER

- [1] Scott family
- [2] Chantel (S)
- [3] Holy Souls
- [4] Anne Rebecca Niño

### ST AMBROSE BARLOW

- [1] David (SI)
- [2] Kate Wynn (SI)

If you would like to have a Sanctuary candle alight in the church for seven days for a loved one or for a special intention, please put the name of the intention on an envelope, with a suggested minimum donation of **£6.00**. Candles are lit on Saturdays

## RESTORATION OF SAINT MARY'S CHURCH AND PRESBYTERY

Thanks to your generosity to Saint Mary's over the last few years, and with the help of some successful bids for grants, we have been able to undertake **£450,000** worth of essential works to preserve the fabric of the church and presbytery. This year we are continuing our fundraising efforts, by appealing to the ongoing generosity of parishioners and visitors, and applying for grants where we can, so that we can move forward with the restoration of Saint Mary's Church & Presbytery.

We have been working with our parish architect over the last four or five years and we now have a very good idea of the works that need to be undertaken and we have had many of the necessary surveys done. The further works in the coming years will be needed to bring all the external fabric of the church up to a standard in order to preserve it for many years to come as well as restoring the interior of our beautiful church.

Further meetings are taking place at this time to determine the next phase of works and, whilst it was envisaged that the next phase might take place this year, following discussions with the Property Department of the diocese, it has been decided that we try to do a larger package of works next year. Doing more works at the same time will, in the long run, be more cost effective. Once we have more details, we will update everyone in due course through the Parish Newsletter. Meanwhile, we are trying to **£500,000** towards the costs of these works.

For any donations you give to the Restoration Fund, please consider, if you pay income tax, gift aiding your donation so that the parish can claim a further 25% on your donation. This will make a real difference to our restoration project.

There are various ways that you can help in our fundraising efforts.

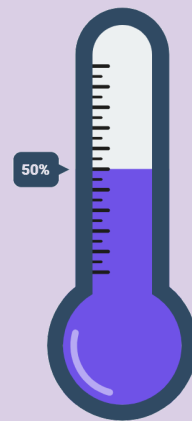
Our Fundraising Thermometer is updated from donations:

into the **Parish Bank Account**, through the **QR Code**, the **Diocesan website**, the **Parish Website**, through the **Card Machines**, given to the **Votive Candle Boxes**, put in the **Window boxes** in church, as well as funds raised from the **Parish Piety Stall**, **Tax reclaimed** on Gift Aided Donations, and other **Personal Donations** by cash or cheque given for The Restoration Fund

**Thank you for your generosity towards the restoration of St Mary's**



## FUNDRAISING TARGET FOR THE NEXT PHASE £500,000



## TO MAKE A DONATION TO THE RESTORATION FUND

### PARISH BANK ACCOUNT

(to make a donation by BACS or to set up a Standing Order)

The Salford Diocesan Trust  
Sort Code: 20 55 34  
Account number: 00915025

Cheques Payable to:  
**St Mary's, Manchester**

**OR SCAN THE QR CODE ON THE FRONT OF THE PARISH NEWSLETTER**